

# McPhillamys Gold Project

## CCC Minutes

Title	McPhillamys Gold Project Community Consultative Committee (CCC) Meeting #26	
Meeting Date	6pm, Monday 27 May 2024	
Venue	Blayney Shire Community Centre	
Meeting Attendees	<b>David Ross (DR)</b>	Independent Chair
	<b>Elizabeth Russ (ER)</b>	Community Representative
	<b>Miles Hedge (MH)</b>	Community Representative
	<b>Cyril Smith (CS)</b>	ORWSA Representative
	<b>Robert (Bob) Russ (RR)</b>	Community Representative (Alternate for Jordan Butler)
	<b>Bruce Reynolds (BR)</b>	Community Representative (Alternate for Daniel Sutton)
	<b>Daniel Sutton (DS)</b>	BHPG Representative Community Representative (able to attend after alternate confirmed)
	<b>Mark Dicker (MD)</b>	GM, Blayney Council
	<b>Robert Taylor</b>	Mayor, Bathurst Regional Council
	<b>Richard Pamplin (RP)</b>	Cabonne Shire Council
	<b>Nick Redmond</b>	Orange City Council
	<b>Wayne Taylor (WT)</b>	Regis Resources
	<b>Kathryn Logan (KL)</b>	Regis Resources
	<b>Danielle Wallace (DW)</b>	Regis Resources
	<b>Rachel Healy (RH)</b>	Regis Resources (Minutes)
Apologies	<b>Jordan Butler (JB)</b>	Community Representative
Next Meeting	6pm, Monday 2 September 2024	

<b>Agenda item</b>	<b>Action</b>
Meeting opened	6:00 pm
1. Apologies	Above
2. Declaration of pecuniary and other interests	DR is paid a fee to chair the meeting. For transparency, DR disclosed that there have been some occasions over the past year where he has been engaged as an independent facilitator for some of Cadia mine's community meetings.
3. Business arising from previous minutes	Nil. Previous minutes endorsed by committee.
4. Correspondence	Nil.
5. McPhillamys Project update	Regis presentation - should be read alongside these minutes.
6. General business	Communications to and from CCC Circular economy and water Environment, Social and Governance commitments at Regis (ESG)
7. Questions sent prior to meeting	Nil.
8. Next meeting	6pm, Monday 2 September 2024 at Blayney Community Centre
9. Meeting closed	7:43pm

	<b>Action Items</b>	<b>Responsible</b>	<b>Due By</b>
1	Book Blayney Community Centre for Monday 02 September 2024	Rachel Healy	Complete
2	Draft minutes to be provided to the Chairperson	Kath Logan	Thursday, 31 May 2024
3	Draft minutes distributed to members by email (including alternates)	David Ross	Monday, 03 June 2024
4	Committee members provide any comments on minutes to Chairperson	All committee members	Monday, 10 June 2024
5	Post on McPhillamys website: <ul style="list-style-type: none"> <li>Final minutes for February 2024 meeting</li> <li>Draft minutes and final presentation for May 2024 meeting</li> </ul>	Rachel Healy  Rachel Healy	Complete  Monday, 17 June 2024
6	Invite members to submit questions before September 2024 meeting.	David Ross	Monday, 19 August 2024
7	Deadline for CCC member questions to be answered at the September 2024 CCC meeting	David Ross	Monday, 26 August 2024
8	Send to CCC members the current draft maps showing proposed noise and air quality monitoring locations	Kath Logan	Attached, pages 6 & 7
9	Send to CCC members Slide 16 of the presentation – Regis Sustainability Report 2023	Kath Logan	Attached, page 8
10	Send half page Blayney Chronicle ad to DR for review	Kath Logan	ASAP
11	McPhillamys to provide copies of draft SIMP to CCC members in advance of next CCC meeting	Danielle Wallace	When available
12	Question on notice: How will the TSF be managed to protect groundwater? (CS) Prepare groundwater slide for DS	Danielle Wallace	2 September 2024
13	Book Blayney Community Centre for CCC meeting Monday 25 November 2024	Rachel Healy	Complete

## **Discussion**

### **Definitive Feasibility Study (DFS) and Final Investment Decision (FID)**

**There will be a DFS update at the next CCC meeting.**

Nearly all Kings Plains residents have been contacted by a staff member regarding timing. If Kings Plains landowners have questions about the project and their personal circumstances, please contact Kath Logan directly.

### **Development consent conditions and management plans**

A State Significant Development approval generally requires construction to commence within five years but there are cases where the commencement date has been extended.

Construction cannot commence until the construction plans are approved. DPHI is backlogged so approval of plans can take many months, although projects needing the plans to commence are generally prioritised.

Copies of the draft Social Impact Management Plan will be given to CCC members before the next CCC meeting for formal presentation and discussion at the meeting.

## **Monitoring**

Regis has purchased additional monitoring equipment and intends to install it when ready, to allow as much additional baseline data as possible to be collected.

During construction, we anticipate leaving mobile monitoring equipment in various locations for differing periods of time depending on the situation. For example, there will be permanent noise monitors in Kings Plains. Extra mobile monitoring units can be hired or bought if they are needed.

The draft noise monitor map is included the draft Noise and Blast Management Plan. We are discussing exact locations with landowners at the moment (draft noise and blast monitoring map attached).

Some dust monitoring will be located with noise monitors, others will not (draft air quality monitoring map attached).

### **Modification 1 (Mod 1)**

It is likely the NSW Government will assess Mod 1 next calendar year. It is not possible to say when the Board will decide to make FID.

Mod 1 will bring some new areas into scope, but it will be generally consistent with the approved pipeline. Modifications include alterations to the pipeline realignment, the powerline and other optimisations.

It is expected Mod 1 will go on exhibition once submitted.

## **Group discussion – key points**

- Message repetition is important, especially for key issues like life of mine, Discovery Ridge, consent conditions.
- Some members of CCC were unaware that there were factsheets on most topics on the McPhillamys website.
- QR codes on advertisements and social media posts were suggested.
- Revisited the possibility of Regis and CCC members doing a joint pop up.
- Half-page ads are supported by members and this meeting will be the first reported to be covered in an advertisement.

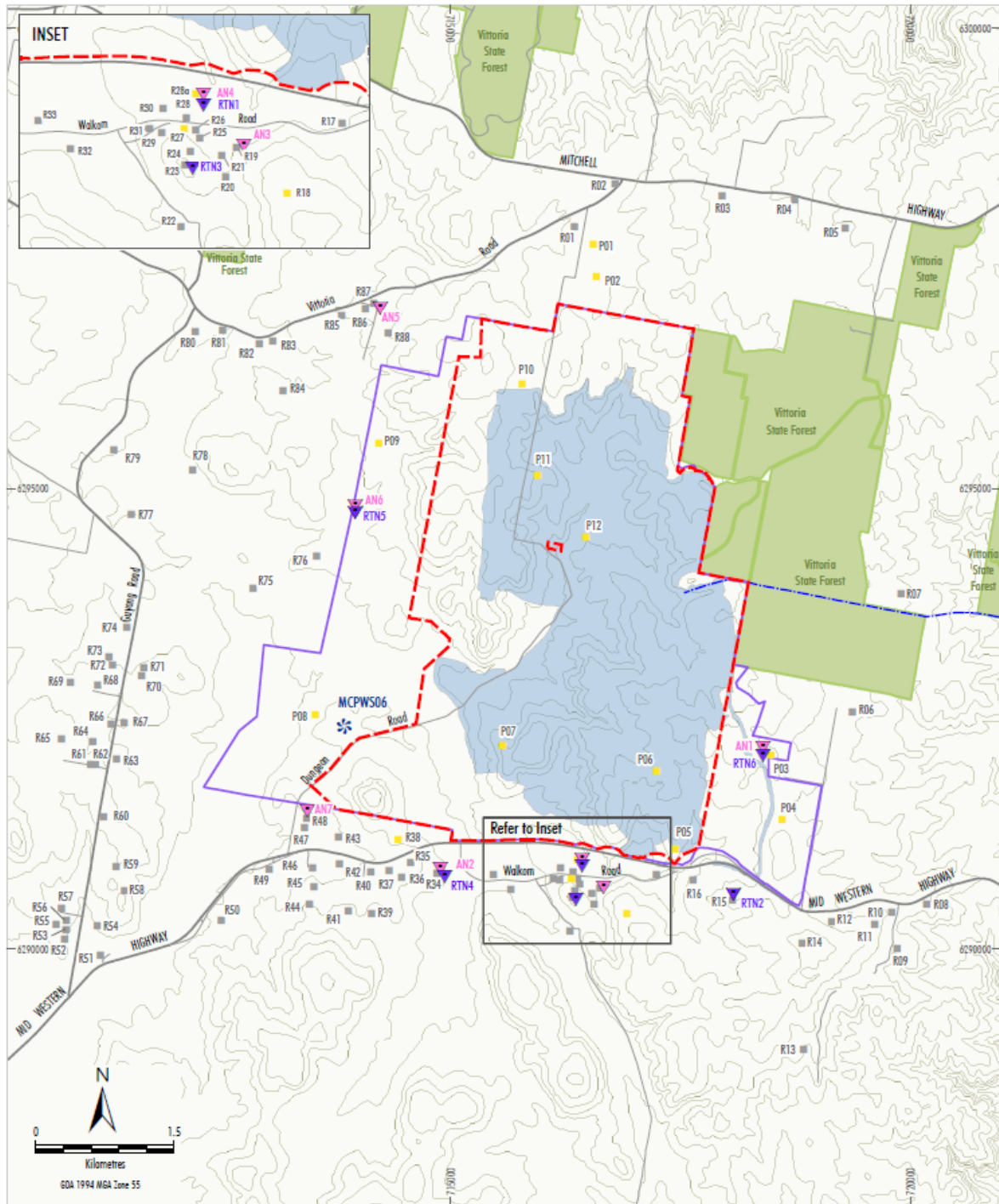
## **General business**

- DR is in the process of recruiting two new CCC members.
- Next two CCC meetings dates agreed for 2<sup>nd</sup> September and 25<sup>th</sup> November 2024.

## **Questions on notice**

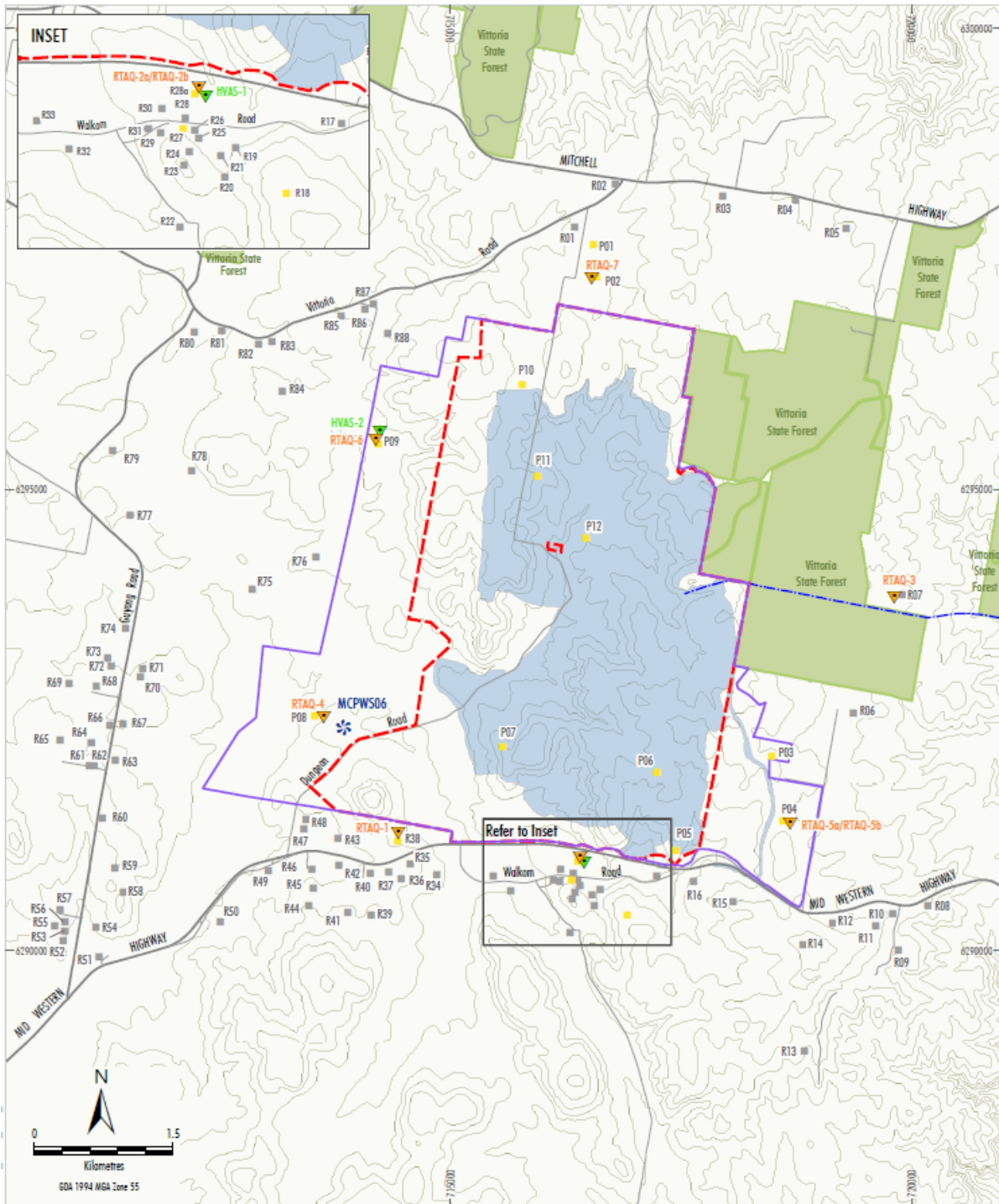
Please explain salt from pipeline water will be managed. (BR)

### Proposed noise monitoring network (CCC presentation 5 June 2023)



- LEGEND**
- NSW State Forest
  - Sensitive Receiver
  - Regis-owned
  - Private
  - McPhillamys Gold Project Site (Mine Development)
  - Mining Lease Applications (MLA 574 & MLA 613)
  - Approved Disturbance Area (Mine Development)
  - Water Supply Pipeline
  - ✻ Meteorological Station
  - ▼ Proposed Noise Monitoring Location (Attended)
  - ▼ Proposed Noise Monitoring Location (Real-time)

### Proposed air quality monitoring network (CCC presentation 5 June 2023)



- |  |  |
|--|--|
| <span style="display: inline-block; width: 15px; height: 10px; background-color: #92d050; border: 1px solid black;"></span> NSW State Forest | <span style="display: inline-block; border: 2px solid purple; width: 20px; height: 10px;"></span> McPhillamys Gold Project Site (Mine Development) |
| <span style="display: inline-block; width: 15px; height: 10px; background-color: #ffff00; border: 1px solid black;"></span> Regis-owned      | <span style="display: inline-block; border: 2px dashed red; width: 20px; height: 10px;"></span> Mining Lease Applications (MLA 574 & MLA 613)      |
| <span style="display: inline-block; width: 15px; height: 10px; background-color: #cccccc; border: 1px solid black;"></span> Private          | <span style="display: inline-block; background-color: #add8e6; width: 20px; height: 10px;"></span> Approved Disturbance Area (Mine Development)    |
|  | <span style="display: inline-block; border-bottom: 2px solid blue; width: 20px;"></span> Water Supply Pipeline                                     |
|  | <span style="display: inline-block; color: blue; font-size: 1em;">*</span> Meteorological Monitoring Location                                      |
|  | <span style="display: inline-block; color: green; font-size: 1em;">▼</span> Air Quality Monitoring Location (HVAS)                                 |
|  | <span style="display: inline-block; color: orange; font-size: 1em;">▼</span> Air Quality Monitoring Location (Real-time)                           |

Sustainability Report overview pages (see <https://regisresources.com.au/wp-content/uploads/2023/11/Regis-SR23-31-10-23.pdf>)



Total workforce	Total revenue	EBITDA
416	\$1,134M	\$371M
Gold production	Reserves	Resources
458,351koz	3.6Moz	7.0Moz

Sustainability performance

Environmental

**Zero**

material environmental incidents registered.

**153ha**

of land was rehabilitated.

We developed the first phase of a Regis Roadmap to **Net Zero emissions** by 2050.

Economic (value added)

We contributed over **\$1b** to the Australian economy through supplier payments, wages, royalties and taxes.

Social: Workforce

**21%**

Female representation in our workforce exceeds the industry average of 19%<sup>1</sup>.

**0.94 LTIFR<sup>2</sup>**

Our LTIFR is below the industry average of 2.2.

Social: Communities

We doubled our targeted expenditure for direct community investment, with a total investment of **\$340,000**

<sup>1</sup> ABS, Labour Force Survey, Detailed, May 2023, four-quarter average data. <https://www.jobscan.kitc.gov.au/industry/mining>  
<sup>2</sup> Lost Time Injury Frequency Rate