



REGIS

RESOURCES LTD

McPhillamys Gold Project

McPhillamys Community Consultative Committee

Monday 24 March 2025

Agenda: Monday 24 March 2025

Item	
1. Welcome, introduction and apologies	DR
2. Declaration of interest	All
3. Business arising from previous minutes	All
4. Previous meeting	DR
5. Correspondence Questions from members	All
6. Update on Project	WT, DW, JI
7. General business	All
8. Next meeting	All



Project Update

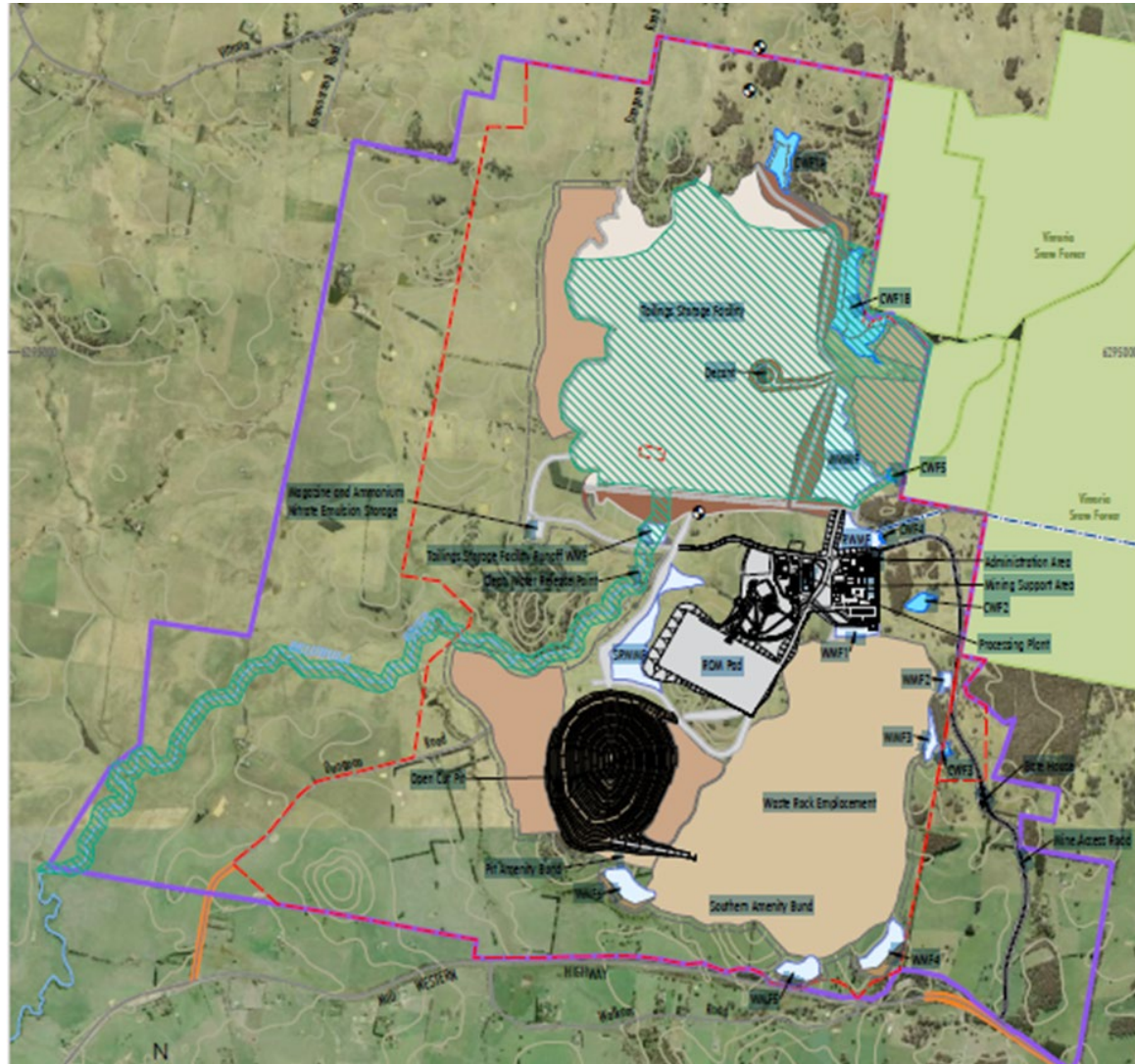
MGP Staffing Updates

- The community relations portfolio now sits in the HSEC team under Danielle Wallace (HSEC Manager).
- Jason Ingham (Health, Safety and Community Superintendent) will now be attending the CCC meetings as the third Regis representative, along with Wayne Taylor and Danielle Wallace.
- Danielle Wallace will be shortly going on maternity leave. Jason Desmond will be Acting HSEC Manager in her absence, and is attending the CCC as an observer this evening.

Section 10 Declaration

- The Kings Plains Declaration was announced on 16 August 2024, impacting a critical area of the Project development site making the approved Project unviable.
- The Statement of Reasons was made public on 11 October 2024.
- Since the Declaration was made, Regis has been considering:
 - Legal options.
 - Alternative TSF locations (note that the Section 10 area rules out three of the four areas considered).

Section 10 Declared Area



Judicial Review – Update

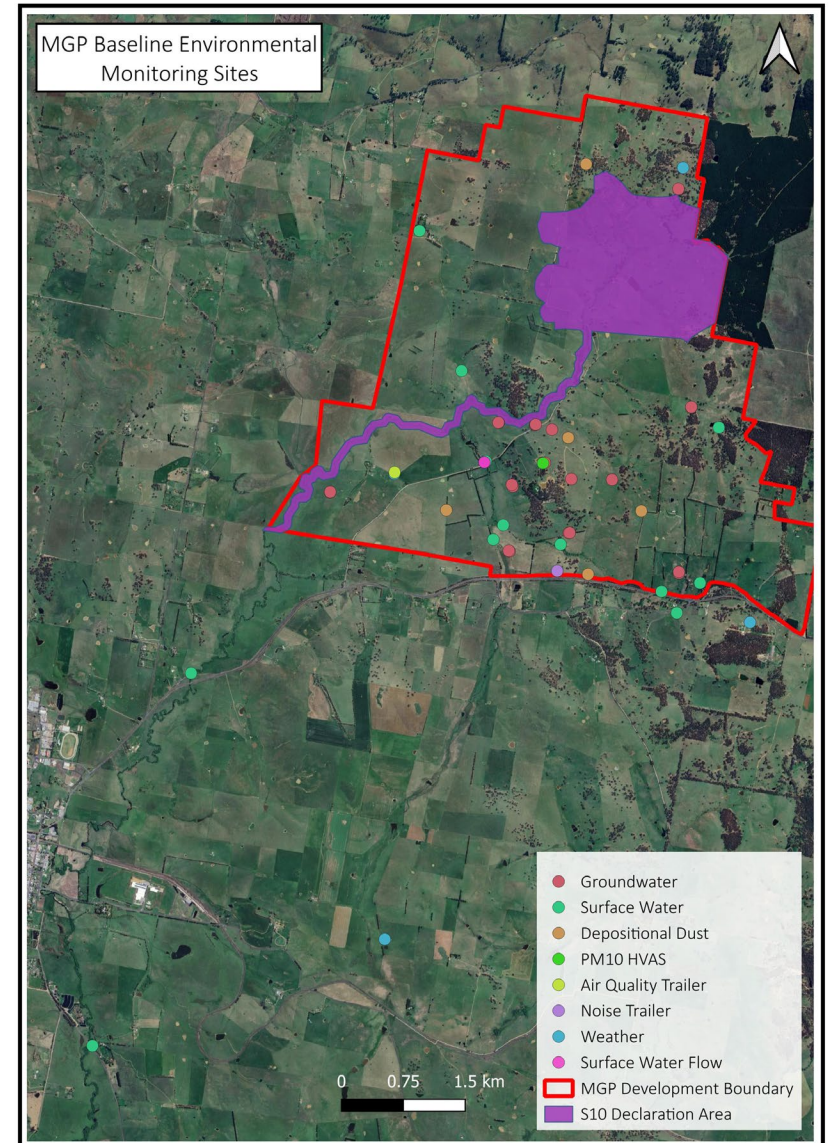
- On 7 November 2024 Regis announced to the ASX that it had commenced formal legal proceedings in the Federal Court.
- Through judicial review proceedings challenging the Minister’s decision, Regis is seeking a declaration from the Federal Court of Australia that:
 - The Section 10 Declaration is legally invalid.
 - The Section 10 Application be redetermined by a different Minister to Minister Plibersek.
 - Costs be awarded to Regis for legal proceedings.
- Next case management hearing date is set for 29 April 2025.

General Project Update

- Continuing to develop alternative infrastructure solutions, including new tailings storage options – this is at conceptual level of study at this stage.
- Ongoing discussions with NSW Government regarding pathway forward for the Project.
- Ongoing and substantial maintenance activities on RRL- owned rural homes using local suppliers and contractors.
- Ongoing activities addressing legacy issues on RRL-owned rural properties:
 - Program to deal with old mine workings at Ingledoon – backfilling & fencing.
 - Farm building review for asbestos products – site specific management (85%).
- Community support:
 - Funding for swimming lessons for ~19 students from Blayney Public School.
- Future site activities:
 - Exploration program under consideration (outside of Section 10 Declared Area).

Ongoing Environmental Monitoring

- Quarterly groundwater monitoring at 23 locations.
- Monthly surface water monitoring at 12 locations.
- Monthly depositional dust monitoring at 5 locations.
- Continuous air quality (PM10) and noise monitoring trailers.
- Testing for metals in dust every 6 days at 1 HVAS location.
- Continuous weather monitoring (including 5 rainfall gauges).
- Continuous streamflow monitoring at 1 location.





REGIS
RESOURCES LTD
McPhillamys Gold Project

Further information:

Danielle Wallace | HSEC Manager

dwallace@regisresources.com 0402 692 588